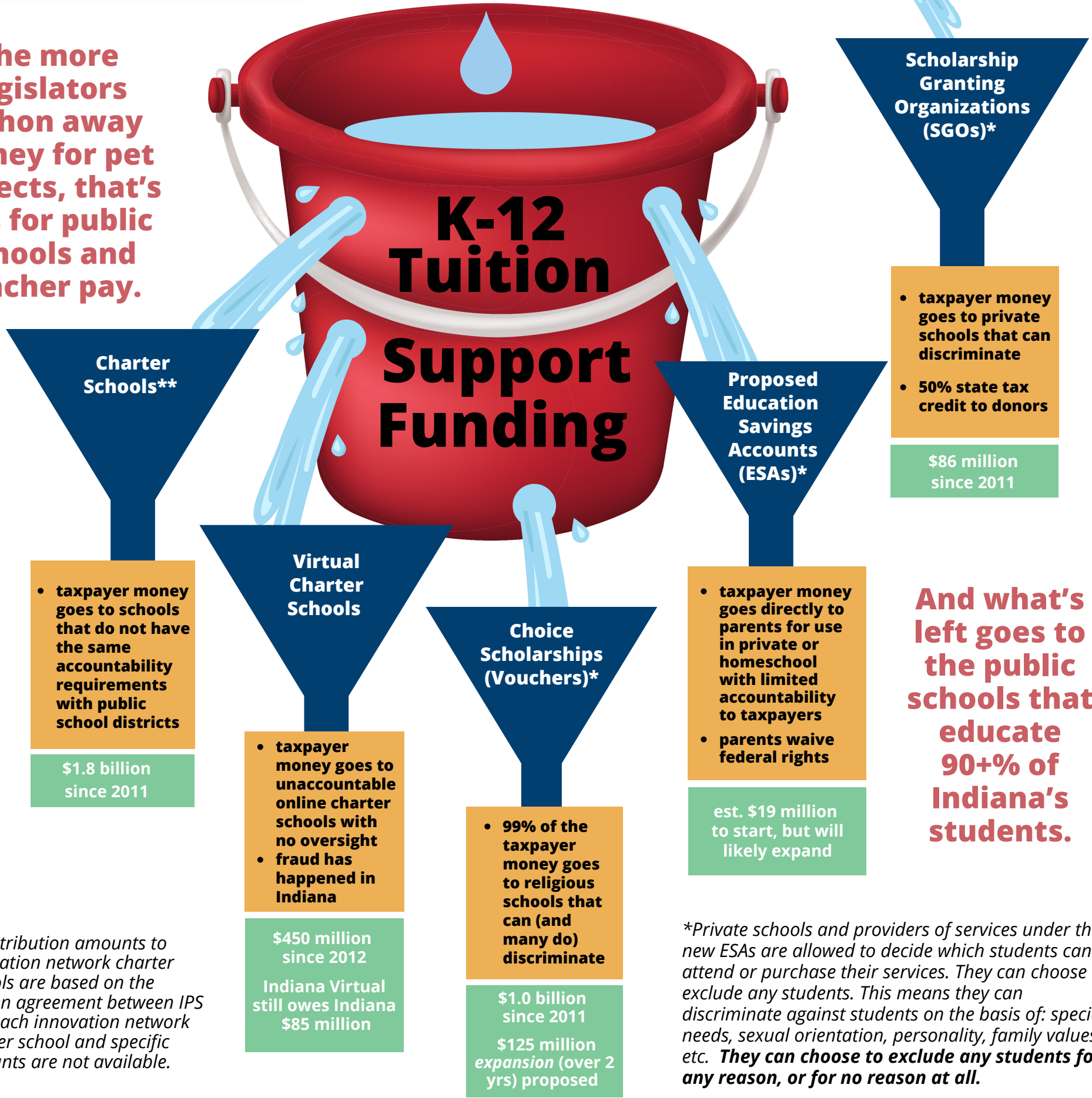


**The more legislators siphon away money for pet projects, that's less for public schools and teacher pay.**



**And what's left goes to the public schools that educate 90+% of Indiana's students.**

\*\*Distribution amounts to innovation network charter schools are based on the written agreement between IPS and each innovation network charter school and specific amounts are not available.

\*Private schools and providers of services under the new ESAs are allowed to decide which students can attend or purchase their services. They can choose to exclude any students. This means they can discriminate against students on the basis of: special needs, sexual orientation, personality, family values, etc. **They can choose to exclude any students for any reason, or for no reason at all.**